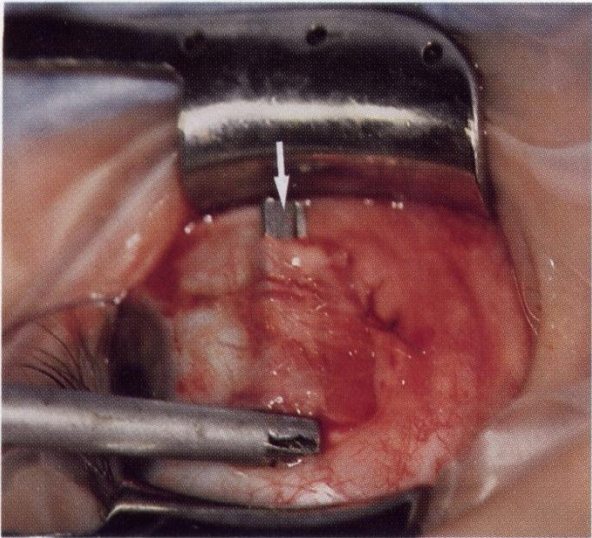


## KOWAL STRABISMUS HOOK-for tight muscles.

In 1994 Dr Lionel Kowal developed a squint hook to aid in the safe placing of sutures and to protect the globe while performing tenotomy on **tight muscles**.



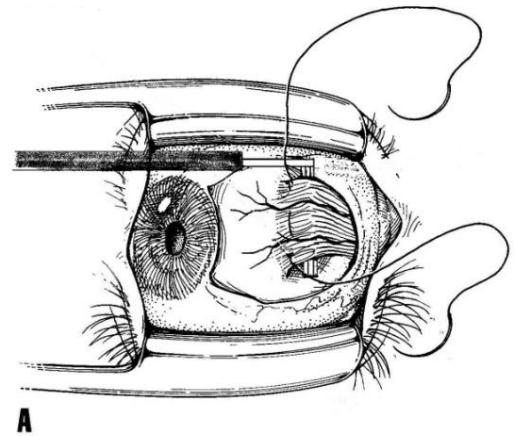
**Figure 38-9.** Kowal squint hook. A, The Kowal squint hook has 10 × 2-mm blades. It is 0.5 mm thick and has a central 1-mm groove. B, The hook is easier to insert under a tight rectus muscle than conventional squint hooks. The central groove (white arrow) serves as a plate for suture placement or for performing a tenotomy while protecting the globe.

The blade is 10mm long and 2.5mm wide incorporating a 1mm wide channel to guide suture placement.

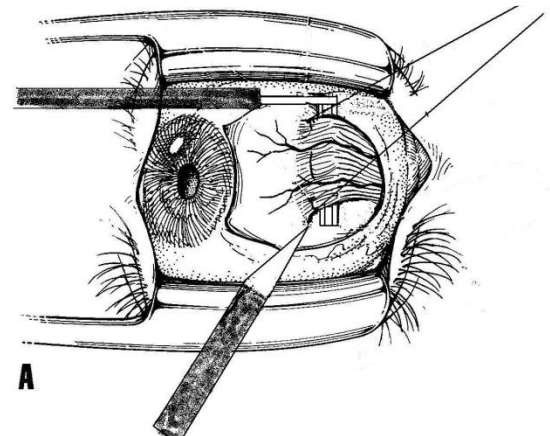


Figure 38-9 taken from Clinical Strabismus Management, Rosebaum, Santiago, page 513 see Google books

Groove acts as a guard and guide for suture placement



Sutures held under some tension



#11 blade- anterior edge of groove acts as a guide for blade, floor acts as a guard

Please contact Roberto Pieri on

**03 9671 3244 for further information**

Bausch And Lomb have this in their catalog somewhere. Very expensive, and I now have them made in China. I will send them to anyone who makes a modest donation to the Royal Victorian Eye and Ear Hospital  
<https://secure.donman.net.au/client/eyeandear/eyeandearhttps.asp>  
and sends me a copy of the receipt.